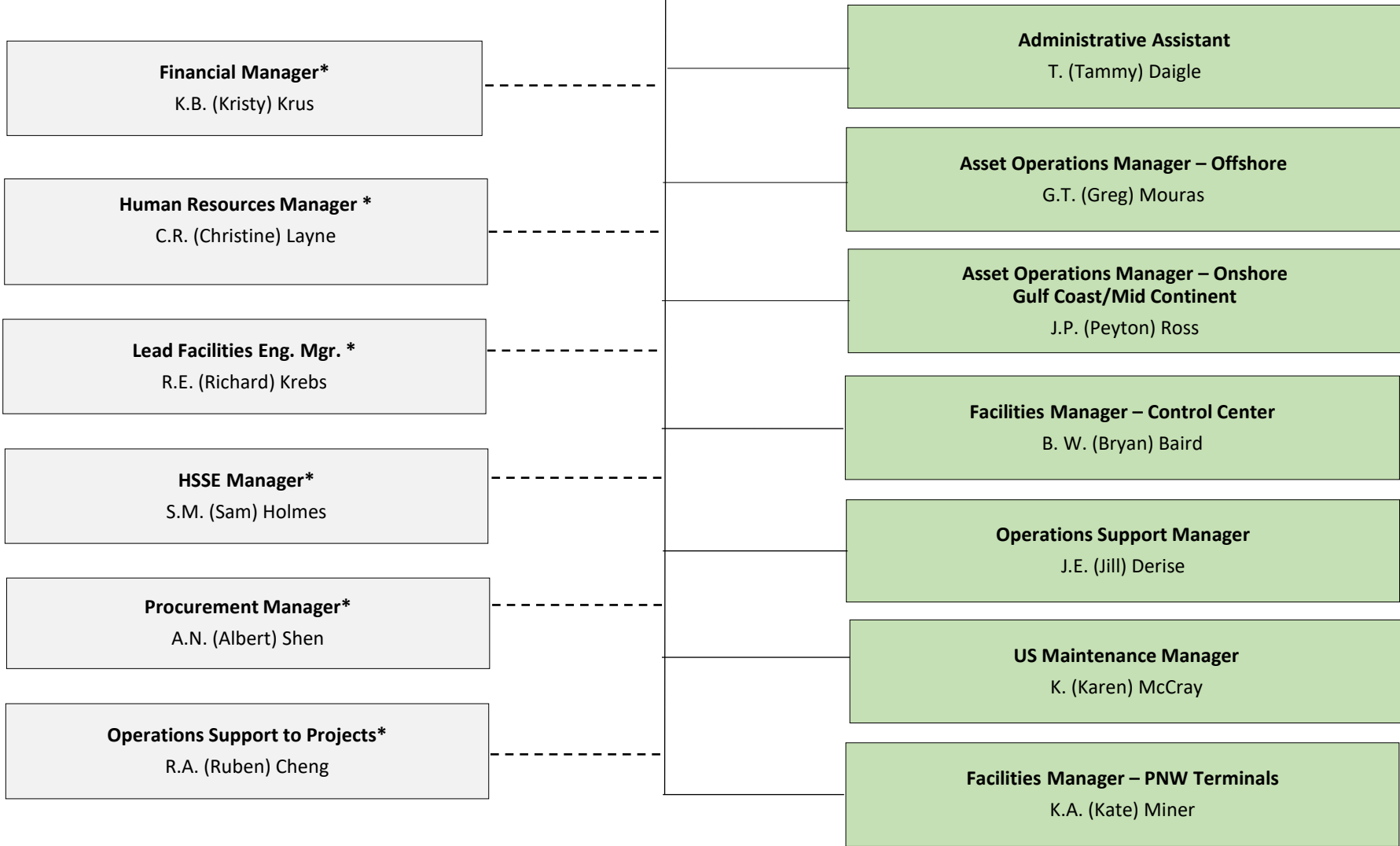


# SHELL MIDSTREAM OPERATIONS

Solid Line – Greg Smith’s Direct Reports  
 \* Reports directly to Head Office  
 \*\* Total includes all active OPS, LTD, TBD,  
 and Greg Smith  
 Note: Interns and BP Students are not  
 counted in headcount  
 ^Retiring 2020

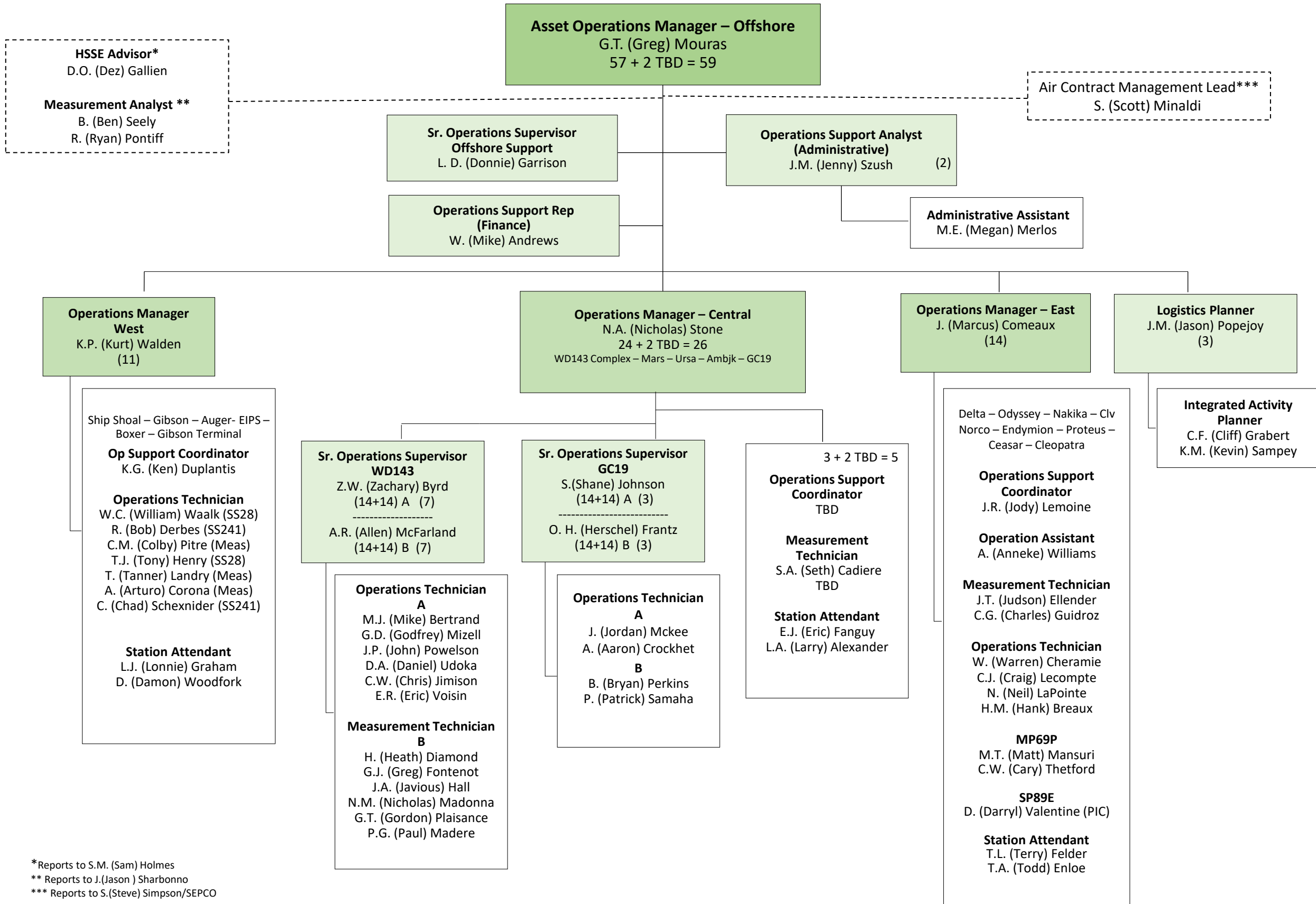
Active  
 OPS – 459  
 LTD - 4  
 TBD - 15

**Vice President Operations**  
 A.G. (Greg) Smith^  
 TBD  
 Total 479\*\*



# OPERATIONS - OFFSHORE

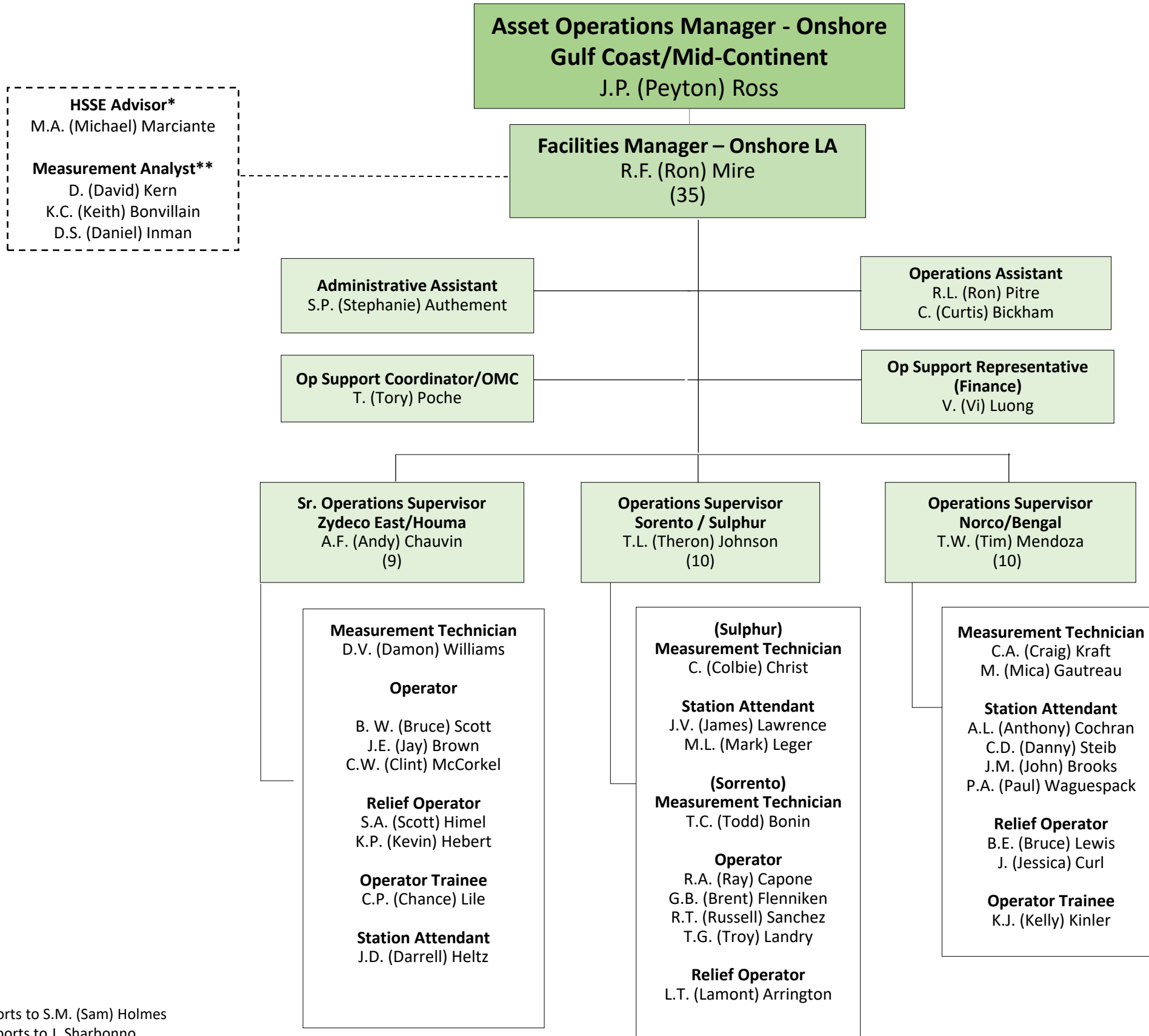
06/01/2020



\*Reports to S.M. (Sam) Holmes  
 \*\* Reports to J.(Jason ) Sharbonno  
 \*\*\* Reports to S.(Steve) Simpson/SEPCO

# OPERATIONS – ONSHORE

06/01/2020



\* Reports to S.M. (Sam) Holmes

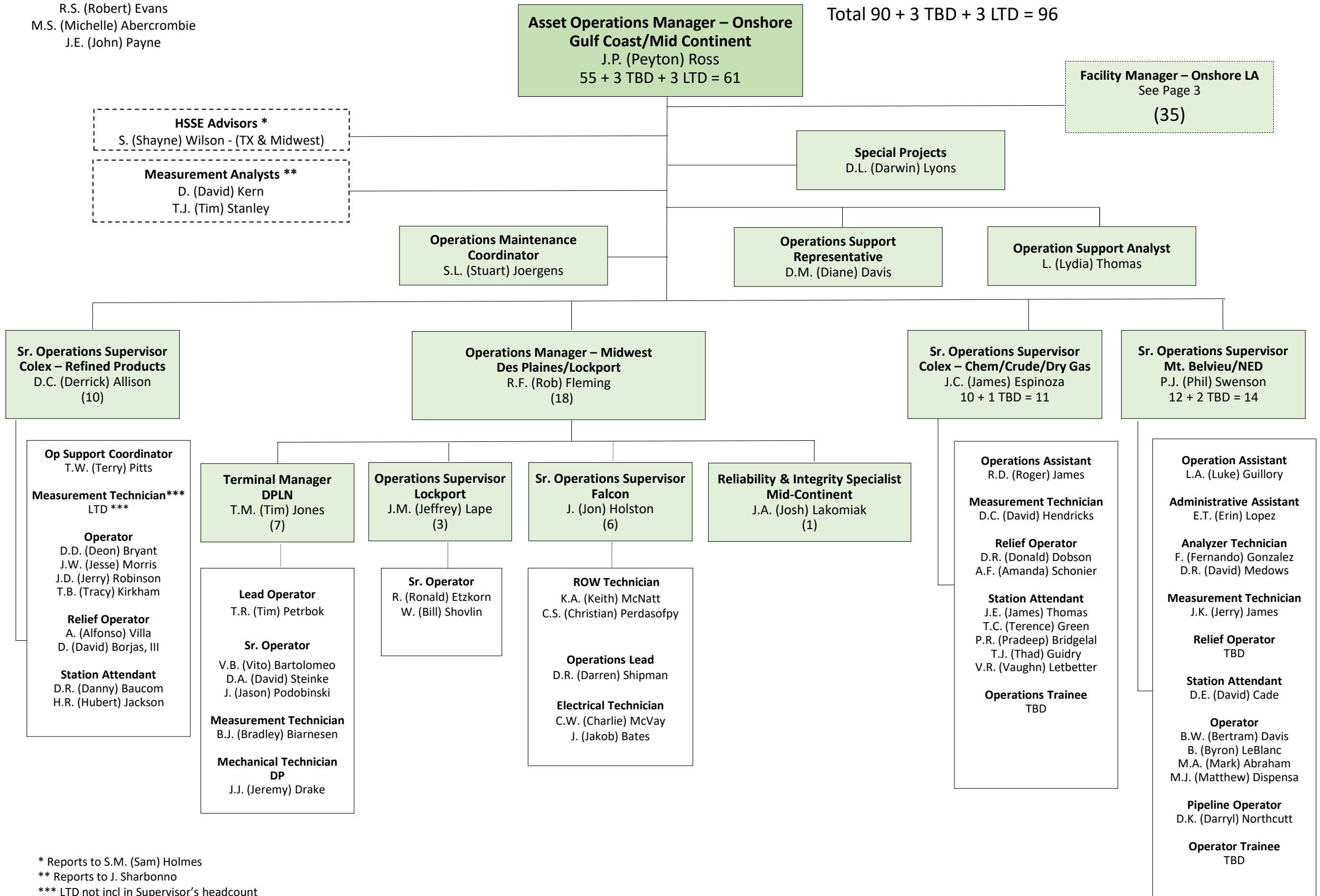
\*\* Reports to J. Sharbonno

# OPERATIONS – ONSHORE

06/01/2020

**LTD**  
 R.S. (Robert) Evans  
 M.S. (Michelle) Abercrombie  
 J.E. (John) Payne

Total 90 + 3 TBD + 3 LTD = 96



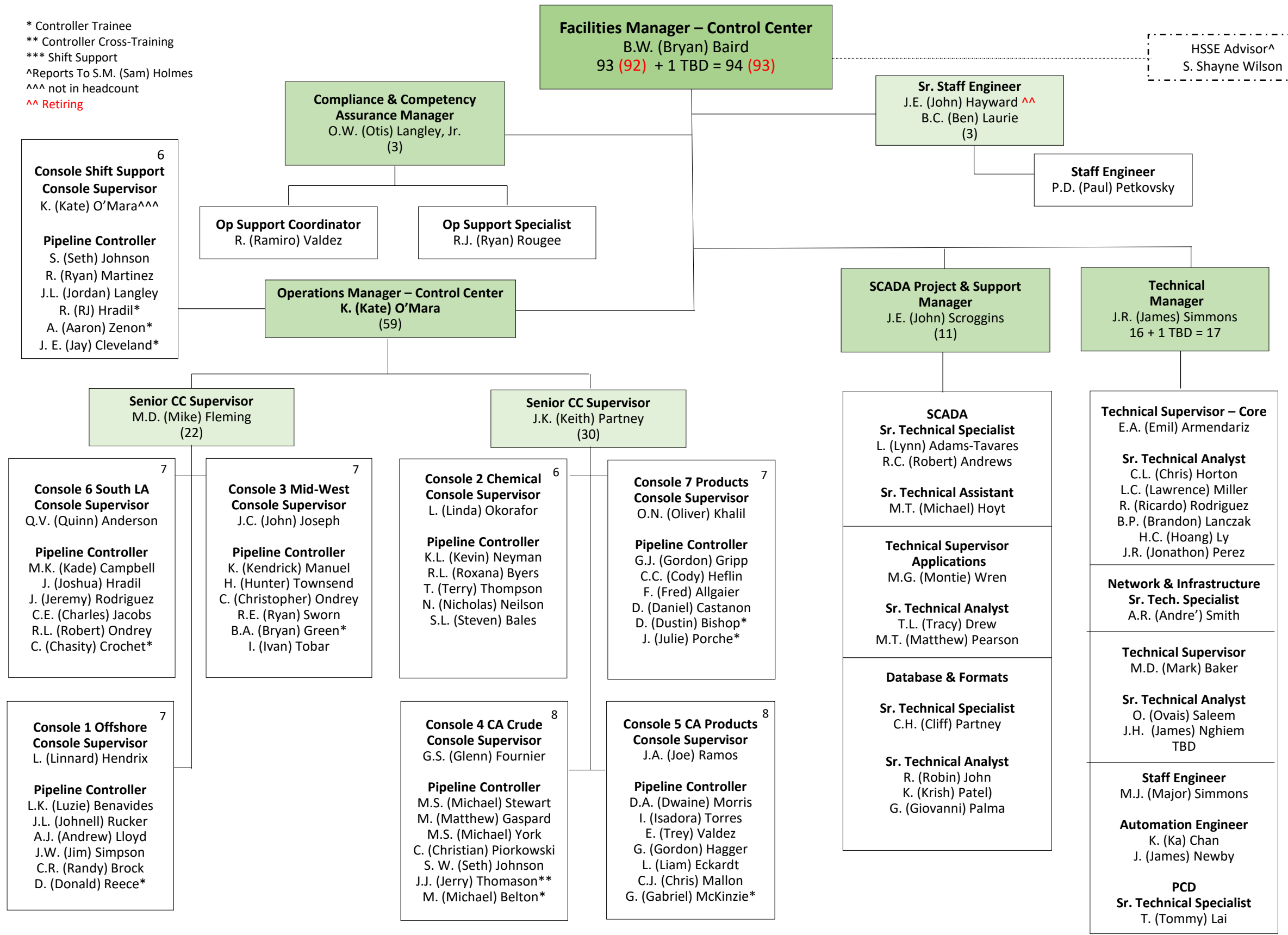
\* Reports to S.M. (Sam) Holmes  
 \*\* Reports to J. Sharbonno  
 \*\*\* LTD not incl in Supervisor's headcount  
 ^ Retirement date

# CONTROL CENTER

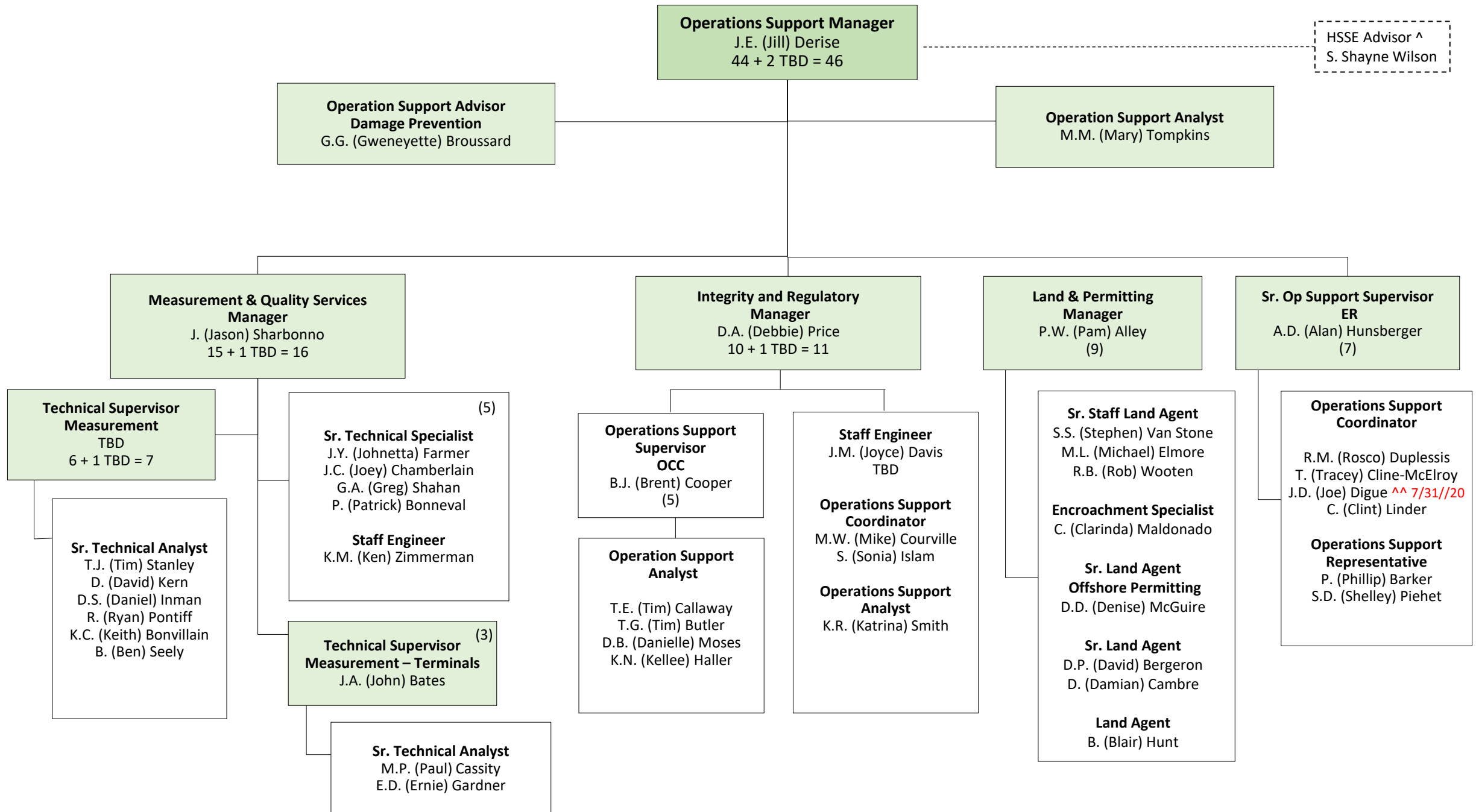
06/01/2020

\* Controller Trainee  
 \*\* Controller Cross-Training  
 \*\*\* Shift Support  
 ^Reports To S.M. (Sam) Holmes  
 ^^ not in headcount  
 ^^ Retiring

HSSE Advisor^  
 S. Shayne Wilson



# OPERATIONS SUPPORT



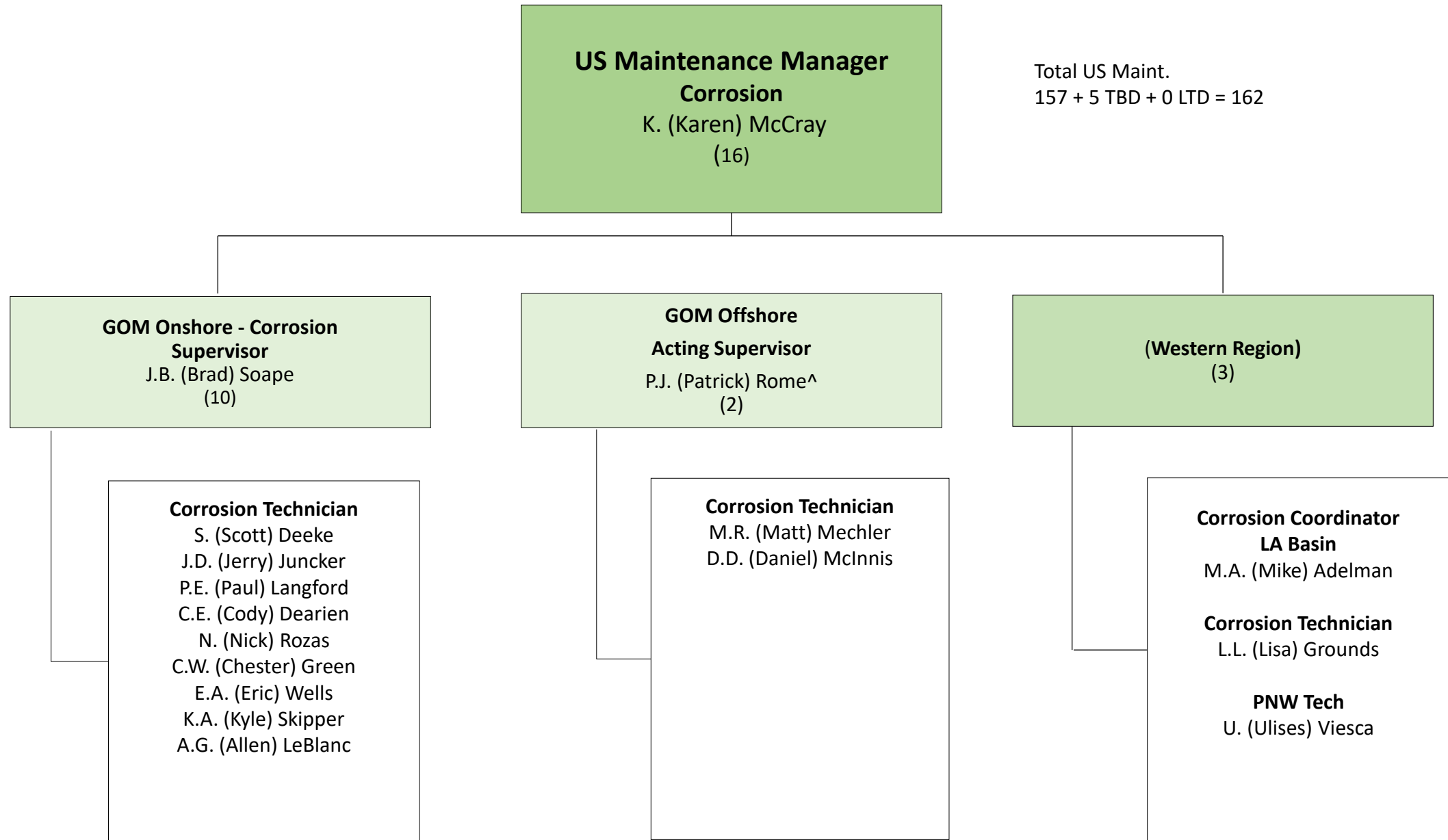
Intern/BP Student – not included in headcount

^ Reports to S.M. (Sam) Holmes

^^ Retirement date in Red

# ASSET INTEGRITY AND PIPELINE MAINTENANCE

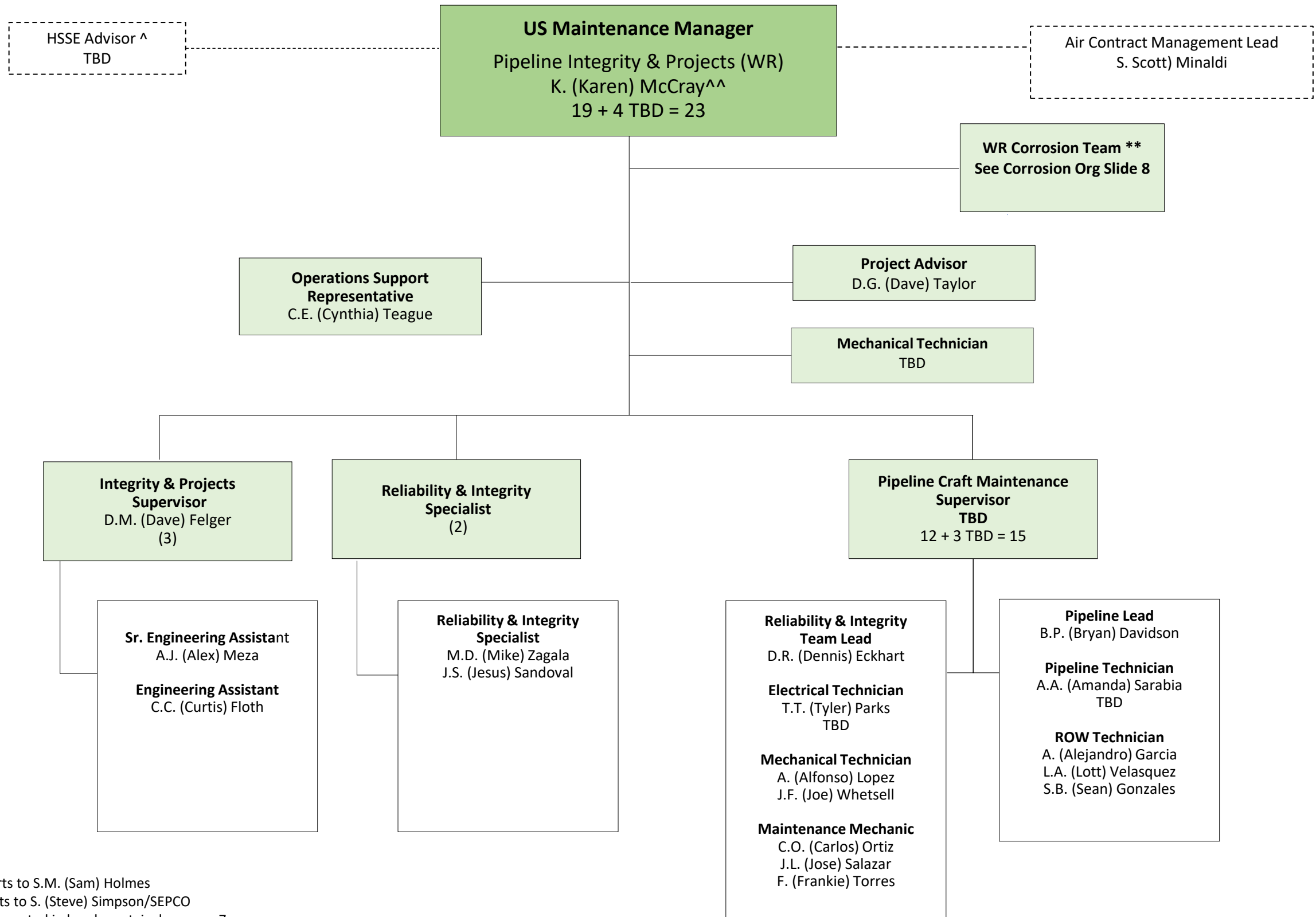
06/01/2020



^Interim Acting Supervisor(not incl in Headcount)

# ASSET INTEGRITY AND PIPELINE MAINTENANCE

06/01/2020



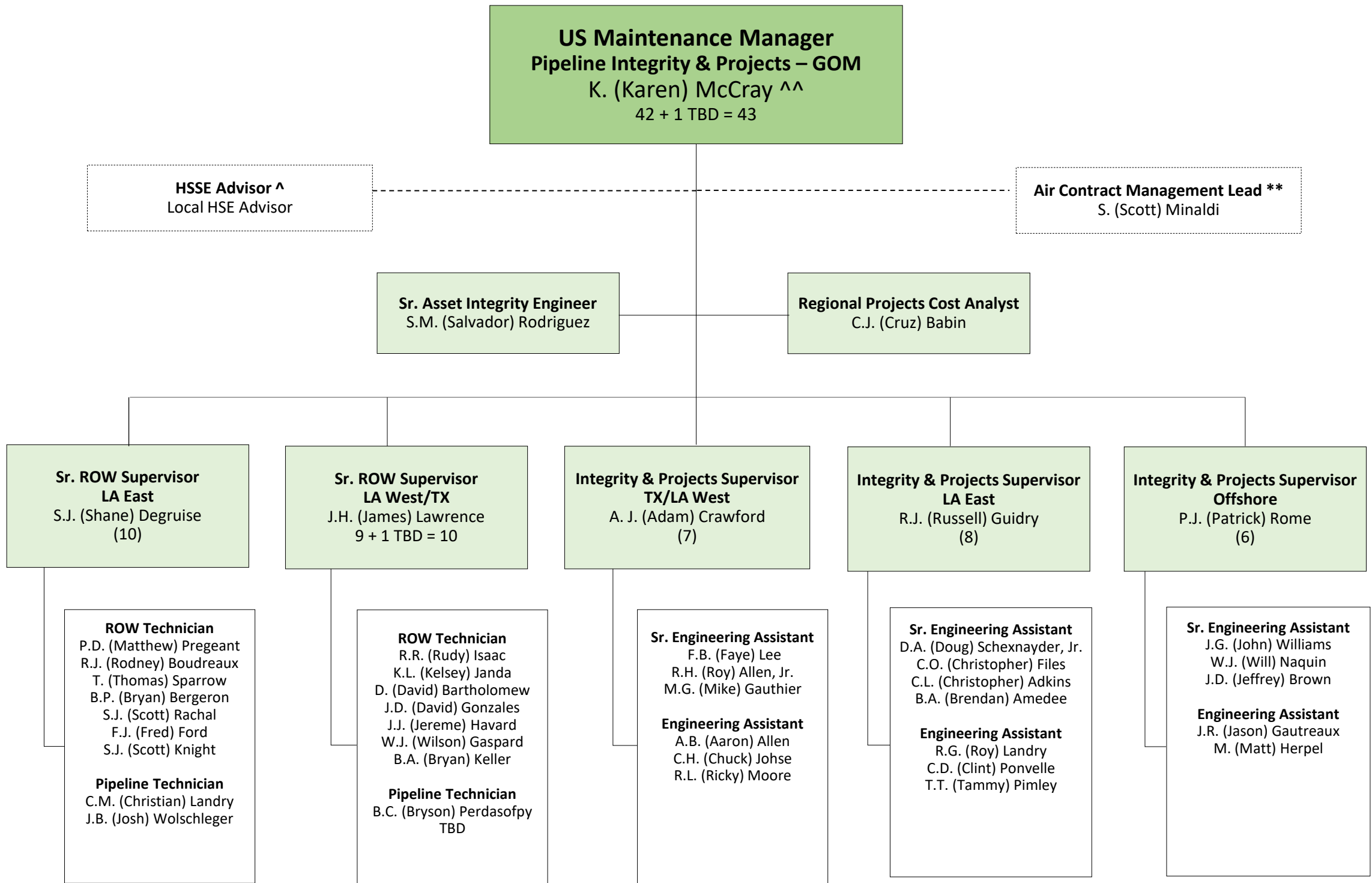
^ Reports to S.M. (Sam) Holmes

\* reports to S. (Steve) Simpson/SEPCO

^^ not counted in headcount, incl on page 7

# ASSET INTEGRITY & PIPELINE MAINTENANCE

06/01/2020



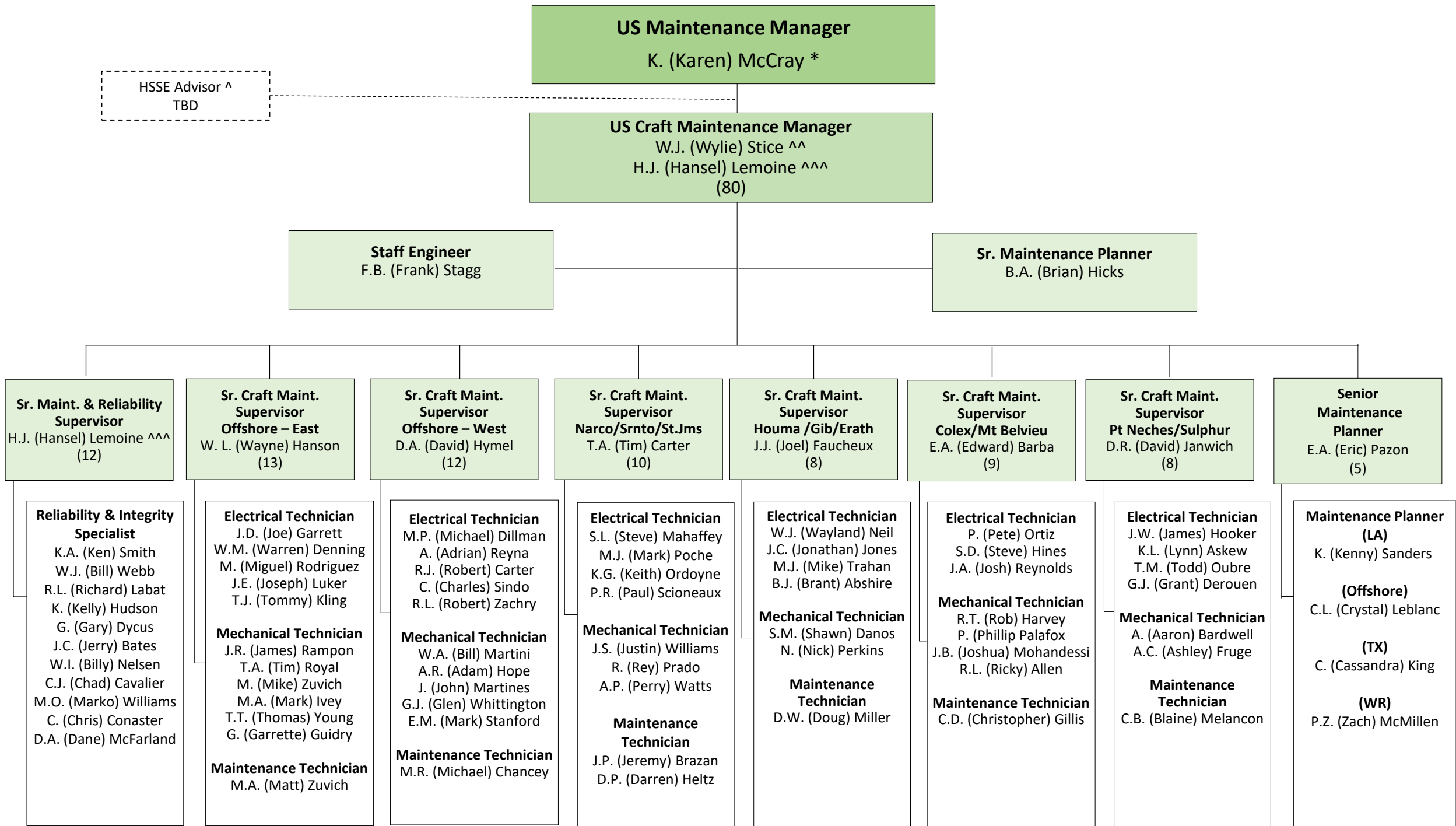
^ Reports to S.M. (Sam) Holmes

^^ Not counted in headcount (counted on page 7)

\*\*Reports to S. (Steve) Simpson/SEPCO

# ASSET INTEGRITY & PIPELINE MAINTENANCE

06/01/2020



^ Reports to S.M. (Sam) Holmes

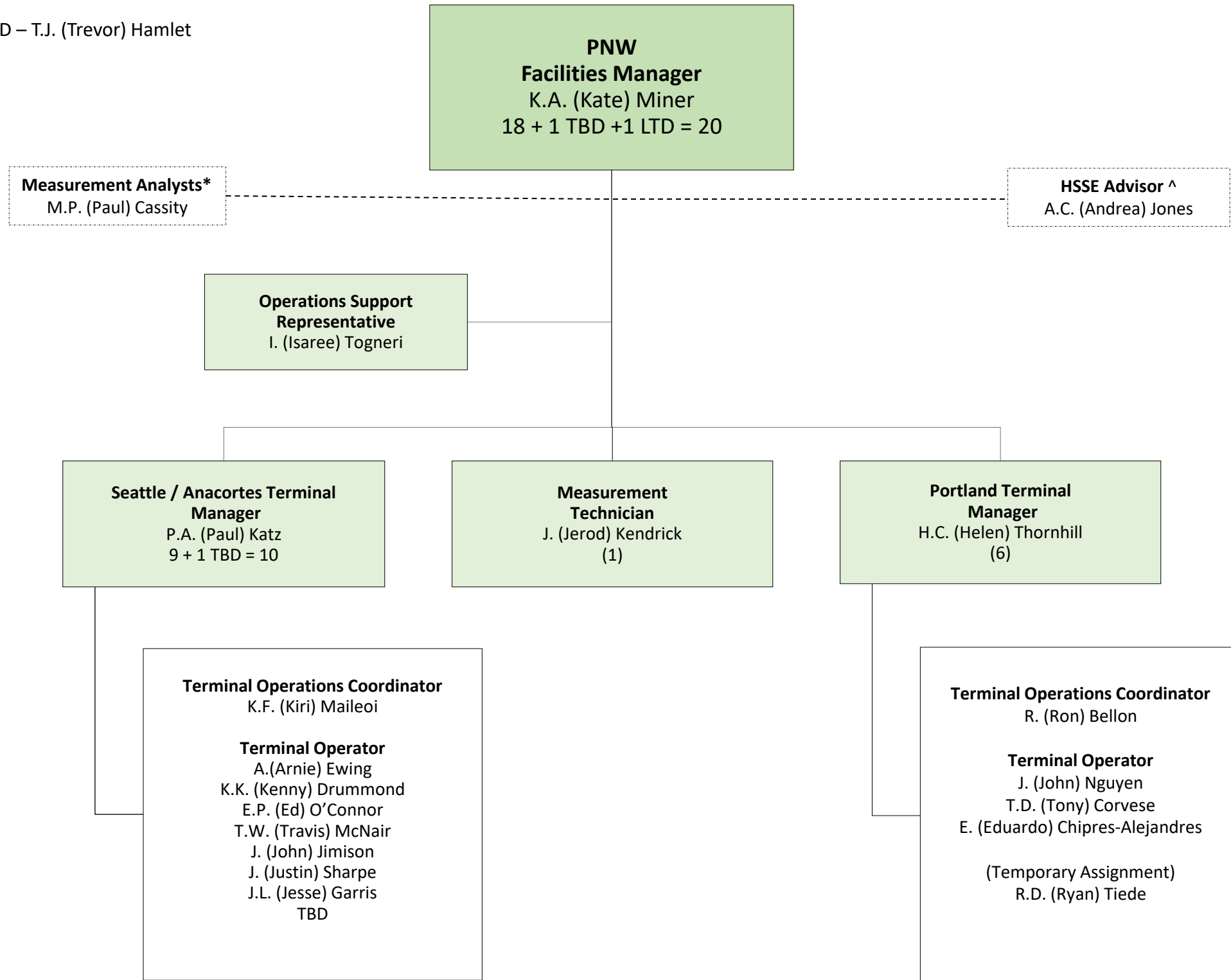
^^ On temporary assignment – Project Maui (S4 HANA)

^^^ Back filling Wylie Stice while he is working on S4 HANA project

\* Not counted in Headcount, included on page 7

# OPERATIONS – PNW TERMINALS

LTD – T.J. (Trevor) Hamlet

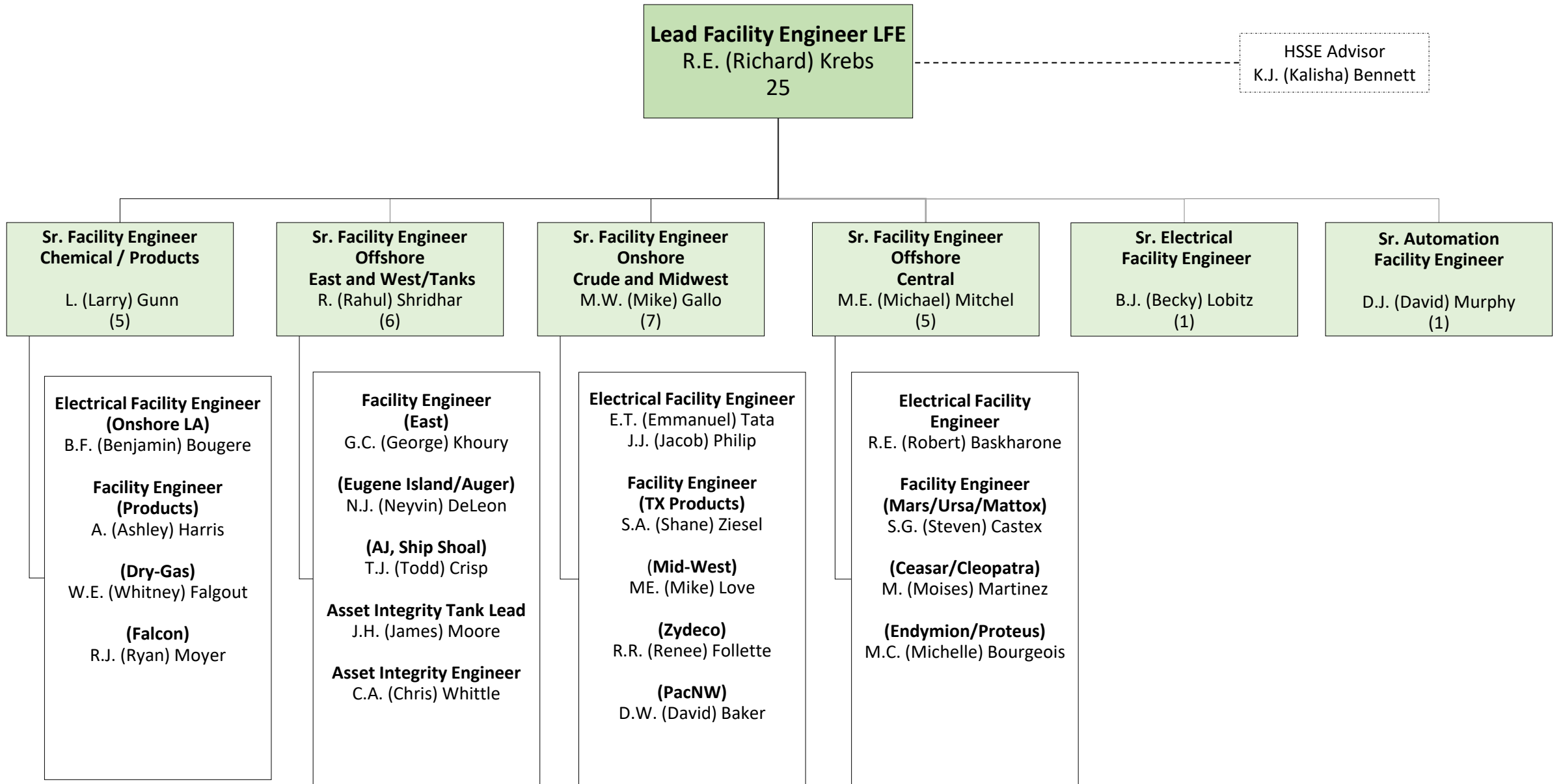


^ Reports to D. Dale Simmons

\* Reports to John Bates

\*\* Backfill for Ryan Loss

# PIPELINE FACILITY ENGINEERING



# FINANCIAL, HUMAN RESOURCES, PROCUREMENT, SAFETY AND LAND & PERMITTING

## Financial Manager Pipeline

K.B. (Kristy) Krus

## Financial Advisors

S.T. (Sash) Cavin

J. (Justin) Haedicke

R.L. (Ricky) Norris

S. (Spencer) Cobbs

R. (Rik) Buimer

X. (Xiao) Ma

A. (Andrew) Vu

## Contracting & Procurement

D.G. (Dennis) Kearn – Sr. Procurement Mgr

A.N. (Albert) Shen – Procurement Mgr. Lead

D. (Darrell) Farlough – Procurement Mgr.

L. (Lionell) Laza – Procurement Mgr.

A.A. (Asher) Kenney – Procurement Mgr.

S. (Sydney) Delpidio – Procurement Mgr.

L.H. (Luis) Comandolli – Sr. Buyer

R.L. (Ricardo) Bergerson – Sr. Buyer

B. B. (Brandon) Thompson - Materials Mgmt Lead

## Operations Support to Projects

### Asset Integrity Assurance Specialist

R.A. (Ruben) Cheng

M.R. (Marty) Byrd – Ops Rep to Projects

W.J. (Wally) Boudreaux – Ops Rep to Projects

D. (David) Hallner – Ops Rep to Projects

## Human Resources

C.R. (Christine) Layne – HR Manager Pipeline

P.A. (Patricia) Henderson – Learning Advisor

## Midstream Excellence

### Training & Assurance Lead

K.A. (Keith) Smith

### Training Coordinator

D.J. (Dale) Dennis

### Training Representative

M. (Mary) Adams

### Assurance Coordinator

T.M. (Toni) Atwell

J.J. (Joel) Sanchez

### Assurance Representative

K. (Kristen) Haydel

### Support Analyst

B.A. (Barbara) Braud

## PacNW Terminals Functional Support

### HSSE Advisor (Environmental)

T. A. (Theresa) Geijer

### Sr. Facility Engineer

D.W. (David) Baker

## HSSE Manager

S.M. (Sam) Holmes

## Operational Safety & Security Advisors

D. D. (Dale) Simmons – Lead

Control Center - TX/Mid-West

S. (Shayne) Wilson

Onshore LA

M.A. (Michael) Marciante

Offshore LA

D.O. (Dez) Gallien

PAC NW Terminals

A.C. (Andrea) Jones

## Environmental Advisors

TX/Mid-West

D. J. (David) Mulkey – Lead

Onshore/Onshore LA

B.E. (Brad) Yarbrough

## Technical Safety Team

R.C. (CV) Velayutham - Lead

K. J. (Kalisha) Bennett

A. (Abigail) Hentges (Grad Hire)

M. Emeh (Grad Hire)

## HSSE Systems Advisors

K.R. (Kendall) Lemelle - Lead

B. (Blake) Chase – FIM Data/eMOC

K. (Katie) Favela – Contractor Safety

M. (Michelle) Romak – Security/RSO/Prosteward