



TRANSPORTATION AND MARKETING

1996
*Safety
Calendar*





PIPE LINE *Gibson work group, Louisiana*

Gibson work group



Tim Carter (left), Steve Poindexter



Jody Braud (left), Doug Winans



Bullwinkle Platform



Auger Platform



Fairway Field in Mobile Bay

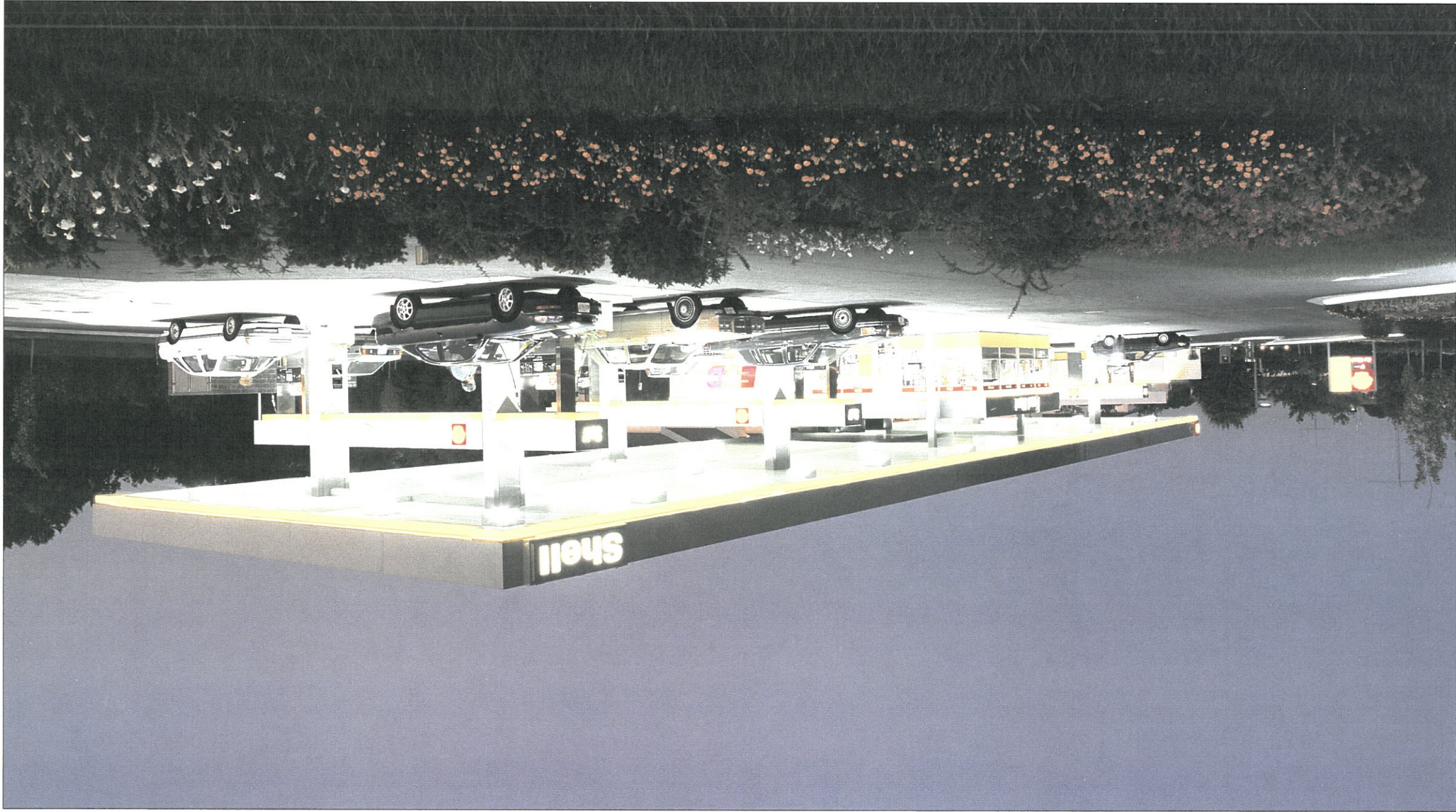
At the Eugene Island 331 platform, where Shell Pipe Line operates a pump station, a box of motor oil filters was blown off the helipad as a helicopter was taking off. The incident emphasized to the Gibson work group the need to keep helipads clear of loose objects which could strike and injure people below the helipad area.

	1 <div>New Year's Day</div>	2	3	4	5 <div>9/80 Schedule B</div>	6																																																																																										
7	8	9	10	11	12 <div>9/80 Schedule A</div>	13																																																																																										
14	15 <div>Martin Luther King Day</div>	16	17	18	19 <div>9/80 Schedule B</div>	20																																																																																										
21	22	23	24	25	26 <div>9/80 Schedule A</div>	27																																																																																										
28	29	30	31		<div><div><div>December 1995</div><table><tr><td>S</td><td>M</td><td>T</td><td>W</td><td>T</td><td>F</td><td>S</td></tr><tr><td></td><td></td><td></td><td></td><td></td><td>1</td><td>2</td></tr><tr><td>3</td><td>4</td><td>5</td><td>6</td><td>7</td><td>8</td><td>9</td></tr><tr><td>10</td><td>11</td><td>12</td><td>13</td><td>14</td><td>15</td><td>16</td></tr><tr><td>17</td><td>18</td><td>19</td><td>20</td><td>21</td><td>22</td><td>23</td></tr><tr><td>24</td><td>25</td><td>26</td><td>27</td><td>28</td><td>29</td><td>30</td></tr><tr><td>31</td><td></td><td></td><td></td><td></td><td></td><td></td></tr></table></div><div><div>February 1996</div><table><tr><td>S</td><td>M</td><td>T</td><td>W</td><td>T</td><td>F</td><td>S</td></tr><tr><td></td><td></td><td></td><td></td><td></td><td>1</td><td>2</td></tr><tr><td>3</td><td>4</td><td>5</td><td>6</td><td>7</td><td>8</td><td>9</td></tr><tr><td>10</td><td>11</td><td>12</td><td>13</td><td>14</td><td>15</td><td>16</td></tr><tr><td>17</td><td>18</td><td>19</td><td>20</td><td>21</td><td>22</td><td>23</td></tr><tr><td>24</td><td>25</td><td>26</td><td>27</td><td>28</td><td>29</td><td></td></tr></table></div></div>	S	M	T	W	T	F	S						1	2	3	4	5	6	7	8	9	10	11	12	13	14	15	16	17	18	19	20	21	22	23	24	25	26	27	28	29	30	31							S	M	T	W	T	F	S						1	2	3	4	5	6	7	8	9	10	11	12	13	14	15	16	17	18	19	20	21	22	23	24	25	26	27	28	29	
S	M	T	W	T	F	S																																																																																										
					1	2																																																																																										
3	4	5	6	7	8	9																																																																																										
10	11	12	13	14	15	16																																																																																										
17	18	19	20	21	22	23																																																																																										
24	25	26	27	28	29	30																																																																																										
31																																																																																																
S	M	T	W	T	F	S																																																																																										
					1	2																																																																																										
3	4	5	6	7	8	9																																																																																										
10	11	12	13	14	15	16																																																																																										
17	18	19	20	21	22	23																																																																																										
24	25	26	27	28	29																																																																																											



MARKETING Midatlantic Retail District

2575 Riva Road, Annapolis, Maryland





"One of the most important aspects of HS&E awareness to Shell dealers is the recognition that customers appreciate clean and well-lit stations. We encourage dealers to keep their stations well lit and clean at night because it makes our customers feel more comfortable about dropping by, no matter what the time."

<div>January 1996</div> <table><tr><th>S</th><th>M</th><th>T</th><th>W</th><th>T</th><th>F</th><th>S</th></tr><tr><td></td><td>1</td><td>2</td><td>3</td><td>4</td><td>5</td><td>6</td></tr><tr><td>7</td><td>8</td><td>9</td><td>10</td><td>11</td><td>12</td><td>13</td></tr><tr><td>14</td><td>15</td><td>16</td><td>17</td><td>18</td><td>19</td><td>20</td></tr><tr><td>21</td><td>22</td><td>23</td><td>24</td><td>25</td><td>26</td><td>27</td></tr><tr><td>28</td><td>29</td><td>30</td><td>31</td><td></td><td></td><td></td></tr></table>							S	M	T	W	T	F	S		1	2	3	4	5	6	7	8	9	10	11	12	13	14	15	16	17	18	19	20	21	22	23	24	25	26	27	28	29	30	31				<div>March 1996</div> <table><tr><th>S</th><th>M</th><th>T</th><th>W</th><th>T</th><th>F</th><th>S</th></tr><tr><td></td><td></td><td></td><td></td><td></td><td>1</td><td>2</td></tr><tr><td>3</td><td>4</td><td>5</td><td>6</td><td>7</td><td>8</td><td>9</td></tr><tr><td>10</td><td>11</td><td>12</td><td>13</td><td>14</td><td>15</td><td>16</td></tr><tr><td>17</td><td>18</td><td>19</td><td>20</td><td>21</td><td>22</td><td>23</td></tr><tr><td>24</td><td>25</td><td>26</td><td>27</td><td>28</td><td>29</td><td>30</td></tr><tr><td>31</td><td></td><td></td><td></td><td></td><td></td><td></td></tr></table>							S	M	T	W	T	F	S						1	2	3	4	5	6	7	8	9	10	11	12	13	14	15	16	17	18	19	20	21	22	23	24	25	26	27	28	29	30	31							<div>1</div>							<div>2</div> <div>9/80 Schedule B</div>							<div>3</div>						
S	M	T	W	T	F	S																																																																																																																							
	1	2	3	4	5	6																																																																																																																							
7	8	9	10	11	12	13																																																																																																																							
14	15	16	17	18	19	20																																																																																																																							
21	22	23	24	25	26	27																																																																																																																							
28	29	30	31																																																																																																																										
S	M	T	W	T	F	S																																																																																																																							
					1	2																																																																																																																							
3	4	5	6	7	8	9																																																																																																																							
10	11	12	13	14	15	16																																																																																																																							
17	18	19	20	21	22	23																																																																																																																							
24	25	26	27	28	29	30																																																																																																																							
31																																																																																																																													
<div>4</div>							<div>5</div>							<div>6</div>							<div>7</div>							<div>8</div>							<div>9</div> <div>9/80 Schedule A</div>							<div>10</div>																																																																																			
<div>11</div>							<div>12</div> <div>Lincoln's Birthday</div>							<div>13</div>							<div>14</div> <div>St. Valentine's Day</div>							<div>15</div>							<div>16</div> <div>9/80 Schedule B</div>							<div>17</div>																																																																																			
<div>18</div>							<div>19</div> <div>President's Day (observed)</div>							<div>20</div>							<div>21</div> <div>Ash Wednesday</div>							<div>22</div> <div>Washington's Birthday</div>							<div>23</div> <div>9/80 Schedule A</div>							<div>24</div>																																																																																			
<div>25</div>							<div>26</div> <div>Orthodox Lent Begins</div>							<div>27</div>							<div>28</div>							<div>29</div>																																																																																																	



PIPE LINE, PRODUCTS DISTRIBUTION *Pasadena Plant, Texas*



Mike Wallace , Wayne Williams, John Sylvester



Karl Harrison, Wayne Williams and Mike Wallace



Wayne Williams, David Sherrill



John Sylvester, Wayne Williams and David Sherrill

NEAR-MISS INCIDENT

A forklift lost power while a contractor was working under the loading rack. When the contractor got ready to "jump start" the dead battery with his truck battery, an alert, safety-smart plant employee stopped him and explained the dangers of generating a spark in a potentially flammable area. This emphasizes the importance of good safety communication with contractors.

February 1996							April 1996							1	2
S	M	T	W	T	F	S	S	M	T	W	T	F	S		
				1	2	3		1	2	3	4	5	6		
4	5	6	7	8	9	10	7	8	9	10	11	12	13		
11	12	13	14	15	16	17	14	15	16	17	18	19	20		
18	19	20	21	22	23	24	21	22	23	24	25	26	27		
25	26	27	28	29			28	29	30						
3							4							8	9
														9/80 Schedule A	
10							11							15	16
														9/80 Schedule B	
17							18							22	23
														9/80 Schedule A	
24							25							29	30
31														9/80 Schedule B	
St. Patrick's Day							Spring Begins								
Palm Sunday															



PIPE LINE, MARINE, PRODUCTS DISTRIBUTION *Carson, California*



Jack Gonzales



Dave Felger, Joe Kinney, Jeremy Hudson



Mike Zagala, Jeff Cazares, Eric Boykins



Steve Guinn, Mike Zagala, Joe Hoffman



Dennis Nelson



(left to right) Joe Kinney, Dave Felger, Jeremy Hudson

A delivery truck was parked at the Martinez loading dock area for about 30 minutes. As the truck pulled away, it left a three-foot-long puddle of oil, which an employee didn't see. She walked right through the oil and almost slipped. As a concerned employee, she immediately called the trucking company and told them their truck had a leak. She later stated, "I should have been paying more attention to where I was walking, because hazards can show up anywhere."

	1 April Fool's Day	2	3	4 First Day of Passover	5 9/80 Schedule A	6																																																																																											
7 Easter Daylight Savings Time Begins	8	9	10	11	12 9/80 Schedule B	13																																																																																											
14 Orthodox Easter	15	16	17	18	19 9/80 Schedule A	20																																																																																											
21	22	23	24 Secretary's Day	25	26 9/80 Schedule B	27																																																																																											
28	29 Shell Houston Open	30 Shell Houston Open			<div> <div>March 1996</div> <table> <tr><td>S</td><td>M</td><td>T</td><td>W</td><td>T</td><td>F</td><td>S</td></tr> <tr><td></td><td></td><td></td><td></td><td>1</td><td>2</td><td></td></tr> <tr><td>3</td><td>4</td><td>5</td><td>6</td><td>7</td><td>8</td><td>9</td></tr> <tr><td>10</td><td>11</td><td>12</td><td>13</td><td>14</td><td>15</td><td>16</td></tr> <tr><td>17</td><td>18</td><td>19</td><td>20</td><td>21</td><td>22</td><td>23</td></tr> <tr><td>24</td><td>25</td><td>26</td><td>27</td><td>28</td><td>29</td><td>30</td></tr> <tr><td>31</td><td></td><td></td><td></td><td></td><td></td><td></td></tr> </table> </div> <div> <div>May 1996</div> <table> <tr><td>S</td><td>M</td><td>T</td><td>W</td><td>T</td><td>F</td><td>S</td></tr> <tr><td></td><td></td><td></td><td>1</td><td>2</td><td>3</td><td>4</td></tr> <tr><td>5</td><td>6</td><td>7</td><td>8</td><td>9</td><td>10</td><td>11</td></tr> <tr><td>12</td><td>13</td><td>14</td><td>15</td><td>16</td><td>17</td><td>18</td></tr> <tr><td>19</td><td>20</td><td>21</td><td>22</td><td>23</td><td>24</td><td>25</td></tr> <tr><td>26</td><td>27</td><td>28</td><td>29</td><td>30</td><td>31</td><td></td></tr> </table> </div>		S	M	T	W	T	F	S					1	2		3	4	5	6	7	8	9	10	11	12	13	14	15	16	17	18	19	20	21	22	23	24	25	26	27	28	29	30	31							S	M	T	W	T	F	S				1	2	3	4	5	6	7	8	9	10	11	12	13	14	15	16	17	18	19	20	21	22	23	24	25	26	27	28	29	30	31	
S	M	T	W	T	F	S																																																																																											
				1	2																																																																																												
3	4	5	6	7	8	9																																																																																											
10	11	12	13	14	15	16																																																																																											
17	18	19	20	21	22	23																																																																																											
24	25	26	27	28	29	30																																																																																											
31																																																																																																	
S	M	T	W	T	F	S																																																																																											
			1	2	3	4																																																																																											
5	6	7	8	9	10	11																																																																																											
12	13	14	15	16	17	18																																																																																											
19	20	21	22	23	24	25																																																																																											
26	27	28	29	30	31																																																																																												

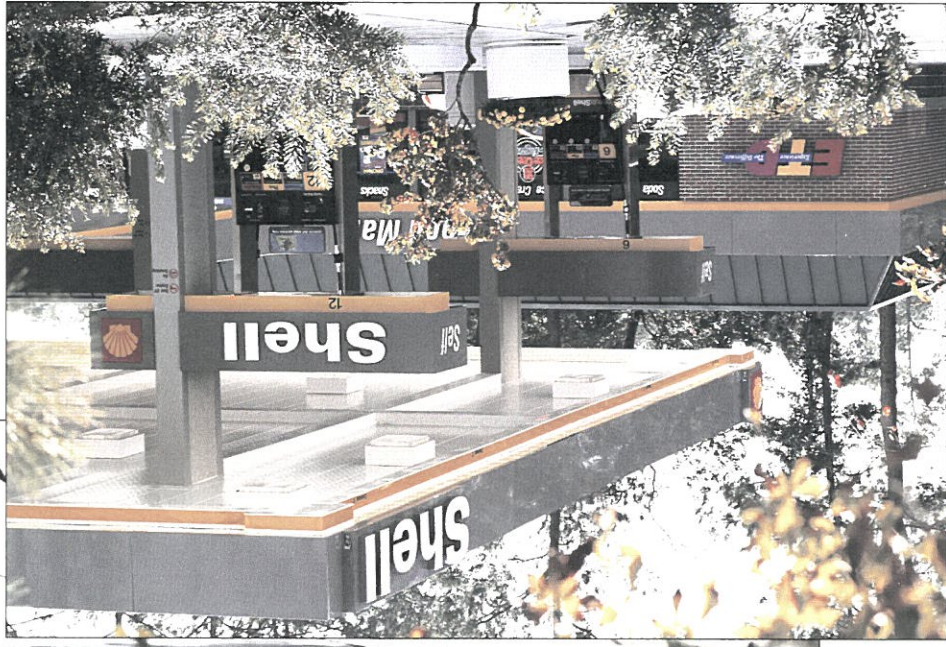


MARKETING, PRODUCTS DISTRIBUTION

Texas Retail District



4655 Research Forest Drive, The Woodlands, Texas



Barry Banks



Barry Banks

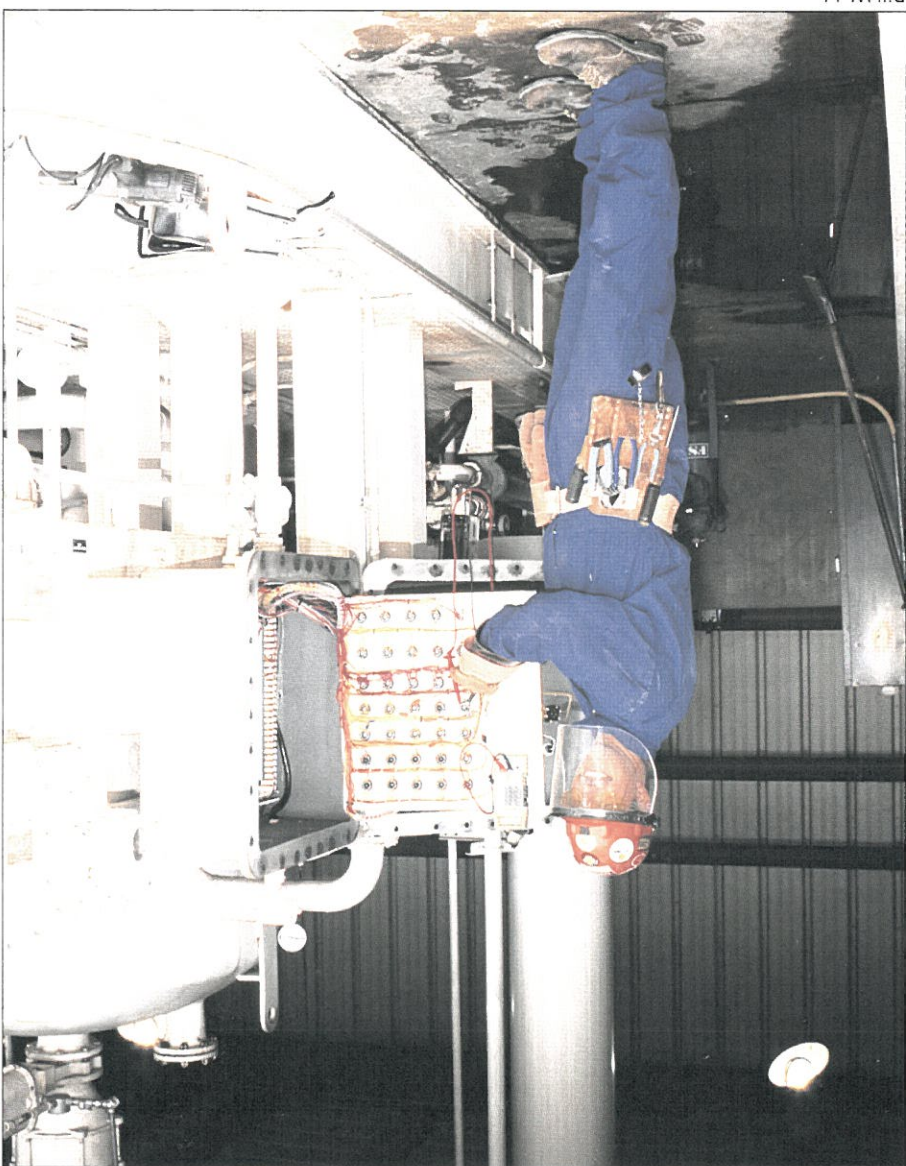
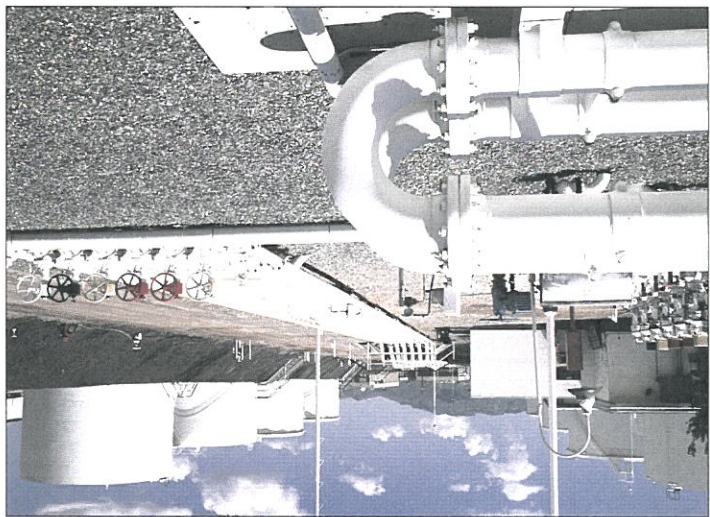


"As a Shell tanker truck driver, I make a lot of gasoline deliveries to stations in The Woodlands during the Shell Houston Open. To make sure the stations are a safe place to buy gas—even when there's a big tanker truck on site—I drive defensively, put out my safety cones and follow all the proper delivery procedures."

Sunday	Monday	Tuesday	Wednesday	Thursday	Friday	Saturday
<p>April 1996</p> <p>S M T W T F S</p> <p>1 2 3 4 5 6</p> <p>7 8 9 10 11 12 13</p> <p>14 15 16 17 18 19 20</p> <p>21 22 23 24 25 26 27</p> <p>28 29 30</p>	<p>June 1996</p> <p>S M T W T F S</p> <p>1</p> <p>2 3 4 5 6 7 8</p> <p>9 10 11 12 13 14 15</p> <p>16 17 18 19 20 21 22</p> <p>23 24 25 26 27 28 29</p> <p>30</p>		<p>1</p> <p>Shell Houston Open</p>	<p>2</p> <p>Shell Houston Open</p>	<p>3</p> <p>Shell Houston Open</p> <p>9/80 Schedule A</p>	<p>4</p> <p>Shell Houston Open</p>
<p>5</p> <p>Shell Houston Open</p>	<p>6</p>	<p>7</p>	<p>8</p>	<p>9</p>	<p>10</p> <p>9/80 Schedule B</p>	<p>11</p>
<p>12</p> <p>Mother's Day</p>	<p>13</p>	<p>14</p>	<p>15</p>	<p>16</p>	<p>17</p> <p>9/80 Schedule A</p>	<p>18</p>
<p>19</p>	<p>20</p>	<p>21</p>	<p>22</p>	<p>23</p>	<p>24</p> <p>9/80 Schedule B</p>	<p>25</p>
<p>26</p>	<p>27</p> <p>Memorial Day (Observed)</p>	<p>28</p>	<p>29</p> <p>Canceled Day</p> <p>Substituted</p>	<p>30</p> <p>Memorial Day</p>	<p>31</p> <p>9/80 Schedule A</p>	



PIPE LINE El Paso, Texas



Bill Webb

NEAR-MISS INCIDENT

Some wooden crating material had been removed from new equipment and neatly stacked away in a fairly remote, seemingly safe location. However, because someone was in too much of a hurry, nails protruding from the wood were not detected and presented a hazard. To solve the problem, the nails were removed and the crating was restacked. This incident highlights the need to detect and eliminate potential hazards.

<div><div>May 1996</div><table><tr><td>S</td><td>M</td><td>T</td><td>W</td><td>T</td><td>F</td><td>S</td></tr><tr><td></td><td></td><td></td><td>1</td><td>2</td><td>3</td><td>4</td></tr><tr><td>5</td><td>6</td><td>7</td><td>8</td><td>9</td><td>10</td><td>11</td></tr><tr><td>12</td><td>13</td><td>14</td><td>15</td><td>16</td><td>17</td><td>18</td></tr><tr><td>19</td><td>20</td><td>21</td><td>22</td><td>23</td><td>24</td><td>25</td></tr><tr><td>26</td><td>27</td><td>28</td><td>29</td><td>30</td><td>31</td><td></td></tr></table></div> <div><div>July 1996</div><table><tr><td>S</td><td>M</td><td>T</td><td>W</td><td>T</td><td>F</td><td>S</td></tr><tr><td></td><td>1</td><td>2</td><td>3</td><td>4</td><td>5</td><td>6</td></tr><tr><td>7</td><td>8</td><td>9</td><td>10</td><td>11</td><td>12</td><td>13</td></tr><tr><td>14</td><td>15</td><td>16</td><td>17</td><td>18</td><td>19</td><td>20</td></tr><tr><td>21</td><td>22</td><td>23</td><td>24</td><td>25</td><td>26</td><td>27</td></tr><tr><td>28</td><td>29</td><td>30</td><td>31</td><td></td><td></td><td></td></tr></table></div>							S	M	T	W	T	F	S				1	2	3	4	5	6	7	8	9	10	11	12	13	14	15	16	17	18	19	20	21	22	23	24	25	26	27	28	29	30	31		S	M	T	W	T	F	S		1	2	3	4	5	6	7	8	9	10	11	12	13	14	15	16	17	18	19	20	21	22	23	24	25	26	27	28	29	30	31				1
S	M	T	W	T	F	S																																																																																					
			1	2	3	4																																																																																					
5	6	7	8	9	10	11																																																																																					
12	13	14	15	16	17	18																																																																																					
19	20	21	22	23	24	25																																																																																					
26	27	28	29	30	31																																																																																						
S	M	T	W	T	F	S																																																																																					
	1	2	3	4	5	6																																																																																					
7	8	9	10	11	12	13																																																																																					
14	15	16	17	18	19	20																																																																																					
21	22	23	24	25	26	27																																																																																					
28	29	30	31																																																																																								
2	3	4	5	6	7 <div>9/80 Schedule B</div>	8																																																																																					
9	10	11	12	13	14 <div>Flag Day</div> <div>9/80 Schedule A</div>	15																																																																																					
16 <div>Father's Day</div>	17	18	19	20 <div>Summer Begins</div>	21 <div>9/80 Schedule B</div>	22																																																																																					
23	24	25	26	27	28 <div>9/80 Schedule A</div>	29																																																																																					
30																																																																																											

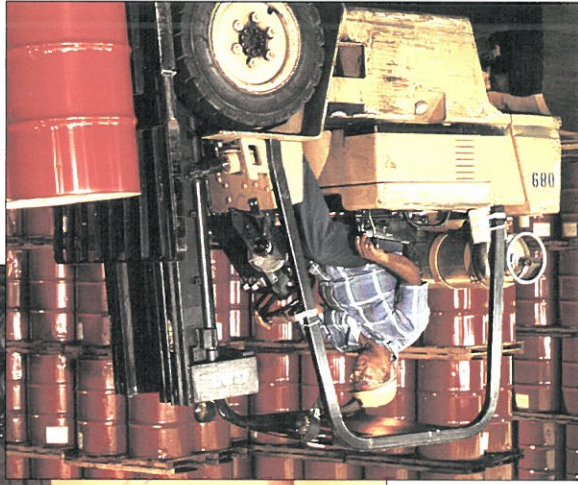


PRODUCTS DISTRIBUTION

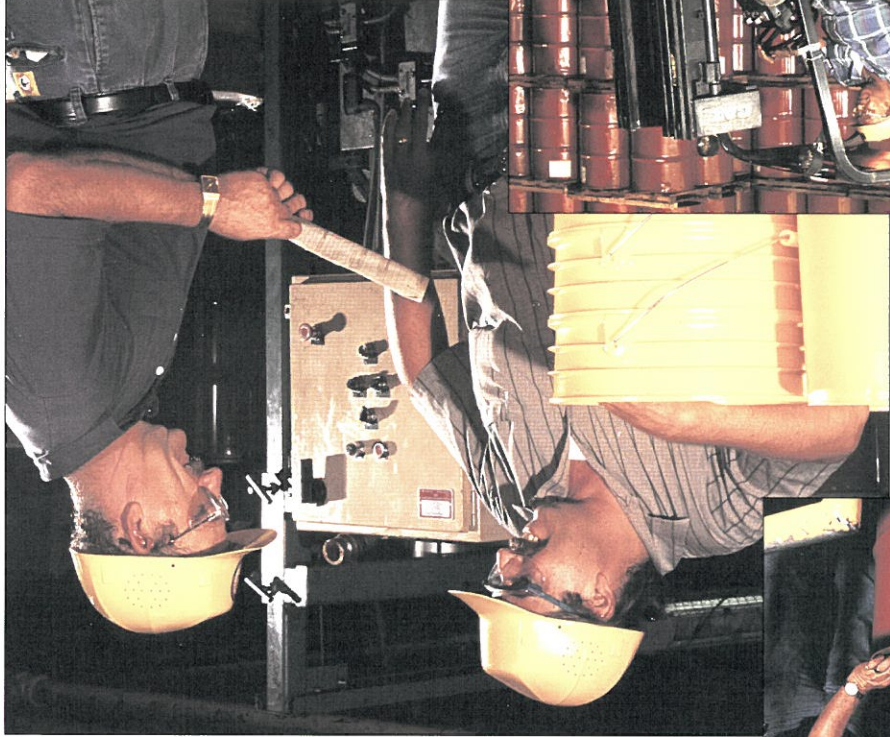
Metairie Plant, Louisiana



Don Vercher



Roland Mullins



Dana Newcomb, Murphy Hebert



Dennis Chaix



Evie! Jackson



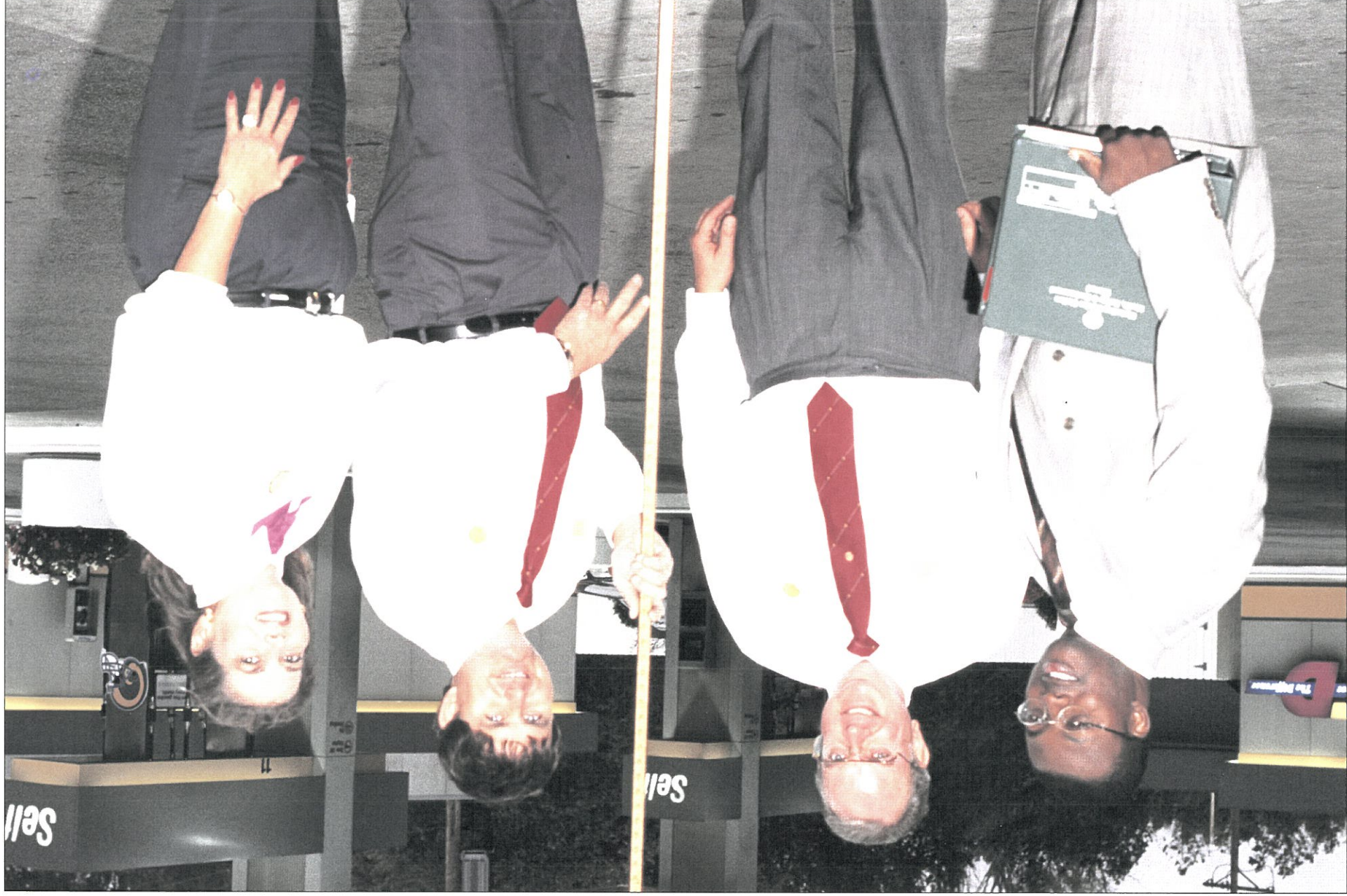
Louis Harper

Prior to inspecting the inside of the plant's No. 5 grease kettle, an operator locked and tagged the electrical panel which controls the large mixing paddles inside the kettle. To ensure the mixing motor was "dead" before he entered the kettle, the operator attempted to start the motor. To his surprise, the motor started and the paddles began to churn. Someone had installed a new electrical panel and left in place the old, disconnected panel which still was labeled "Panel for K-5." To solve the problem, the operator had the old panel removed and the new panel properly marked. Remember: Always double-check.

	1	2	3	4	5	6																																																																																																		
				Independence Day	9/80 Schedule B																																																																																																			
7	8	9	10	11	12	13																																																																																																		
					9/80 Schedule A																																																																																																			
14	15	16	17	18	19	20																																																																																																		
					9/80 Schedule B																																																																																																			
21	22	23	24	25	26	27																																																																																																		
					9/80 Schedule A																																																																																																			
28	29	30	31		<div>June 1996</div> <table><tr><td>S</td><td>M</td><td>T</td><td>W</td><td>T</td><td>F</td><td>S</td></tr><tr><td></td><td></td><td></td><td></td><td></td><td></td><td>1</td></tr><tr><td>2</td><td>3</td><td>4</td><td>5</td><td>6</td><td>7</td><td>8</td></tr><tr><td>9</td><td>10</td><td>11</td><td>12</td><td>13</td><td>14</td><td>15</td></tr><tr><td>16</td><td>17</td><td>18</td><td>19</td><td>20</td><td>21</td><td>22</td></tr><tr><td>23</td><td>24</td><td>25</td><td>26</td><td>27</td><td>28</td><td>29</td></tr><tr><td>30</td><td></td><td></td><td></td><td></td><td></td><td></td></tr></table> <div>August 1996</div> <table><tr><td>S</td><td>M</td><td>T</td><td>W</td><td>T</td><td>F</td><td>S</td></tr><tr><td></td><td></td><td></td><td></td><td></td><td>1</td><td>2</td></tr><tr><td>3</td><td>4</td><td>5</td><td>6</td><td>7</td><td>8</td><td>9</td></tr><tr><td>10</td><td>11</td><td>12</td><td>13</td><td>14</td><td>15</td><td>16</td></tr><tr><td>17</td><td>18</td><td>19</td><td>20</td><td>21</td><td>22</td><td>23</td></tr><tr><td>24</td><td>25</td><td>26</td><td>27</td><td>28</td><td>29</td><td>30</td></tr><tr><td>31</td><td></td><td></td><td></td><td></td><td></td><td></td></tr></table>		S	M	T	W	T	F	S							1	2	3	4	5	6	7	8	9	10	11	12	13	14	15	16	17	18	19	20	21	22	23	24	25	26	27	28	29	30							S	M	T	W	T	F	S						1	2	3	4	5	6	7	8	9	10	11	12	13	14	15	16	17	18	19	20	21	22	23	24	25	26	27	28	29	30	31						
S	M	T	W	T	F	S																																																																																																		
						1																																																																																																		
2	3	4	5	6	7	8																																																																																																		
9	10	11	12	13	14	15																																																																																																		
16	17	18	19	20	21	22																																																																																																		
23	24	25	26	27	28	29																																																																																																		
30																																																																																																								
S	M	T	W	T	F	S																																																																																																		
					1	2																																																																																																		
3	4	5	6	7	8	9																																																																																																		
10	11	12	13	14	15	16																																																																																																		
17	18	19	20	21	22	23																																																																																																		
24	25	26	27	28	29	30																																																																																																		
31																																																																																																								



MARKETING *Mid-America Retail District*



11011 Bellefontaine, St. Louis, Missouri

(from left) Rob Shaviss: Operator Paul Ronsnick: Manager Dennis Sizemore: Operator Sharon Ronsnick



"As a district HS&E representative in Marketing, I'm in charge of regulatory compliance for retail service stations. Every year, I conduct a health, safety and environmental audit of each station in my district. During the audit, I discuss compliance issues with dealers and provide information on federal, state and local HS&E rules. It's important that the dealers understand their responsibilities to protect their customers, their employees and the environment."

July 1996							September 1996									1		2		3			
S	M	T	W	T	F	S	S	M	T	W	T	F	S										
	1	2	3	4	5	6	1	2	3	4	5	6	7										
7	8	9	10	11	12	13	8	9	10	11	12	13	14										
14	15	16	17	18	19	20	15	16	17	18	19	20	21										
21	22	23	24	25	26	27	22	23	24	25	26	27	28										
28	29	30	31				29	30															
4							5							6		7		8		9		10	
11							12							13		14		15		16		17	
18							19							20		21		22		23		24	
25							26							27		28		29		30		31	



PRODUCTS DISTRIBUTION

Cincinnati Plant, Ohio



Mike Schaipe



Mike Schaipe



Sissy Wheeler

Cutting the grass at the Cincinnati Plant, built on five acres of hilly landscape, requires special attention to safety. On one occasion, an employee was pulling a lawn mower attachment behind a tractor when the front right wheel broke off, causing the tractor's axle to bog down into the grass. Fortunately, the employee was following safety procedures by traveling in a low gear up and down the slope of the hill--not crosswise--which allowed him to maintain control of the tractor. Also, the employee was using his seatbelt and was wearing his hard hat, steel-toed shoes and safety glasses. Remember: Always follow safety procedures and wear the proper safety equipment.

Sunday	Monday	Tuesday	Wednesday	Thursday	Friday	Saturday
1	2 Labor Day	3	4	5	6 9/80 Schedule A	7
8 Grandparent's Day	9	10	11	12	13 9/80 Schedule B	14 First Day of Rosh Hashana
15	16	17	18	19	20 9/80 Schedule A	21
22 Autumn Begins	23 Yom Kippur	24	25	26	27 9/80 Schedule B	28
29	30					

August 1996

S	M	T	W	T	F	S
				1	2	3
4	5	6	7	8	9	10
11	12	13	14	15	16	17
18	19	20	21	22	23	24
25	26	27	28	29	30	31

October 1996

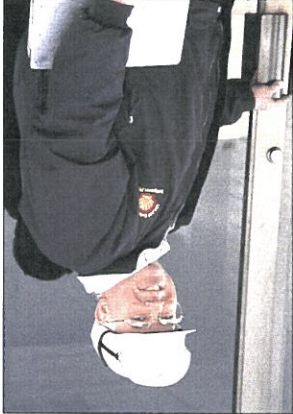
S	M	T	W	T	F	S
			1	2	3	4
5	6	7	8	9	10	11
12	13	14	15	16	17	18
19	20	21	22	23	24	25
26	27	28	29	30	31	



PRODUCTS DISTRIBUTION Bridgeport Plant



Rene Chartier



Harry Nolan



Debbie Mica



Dayton Thomas



(top row) Rick Shaw, Ray Dawley, Steve Palumbo, Hank Chmielecki, Rene Chartier, Mike Negron.
(bottom row) Glenn Fillion, Tim Dobyns



Rick Shaw

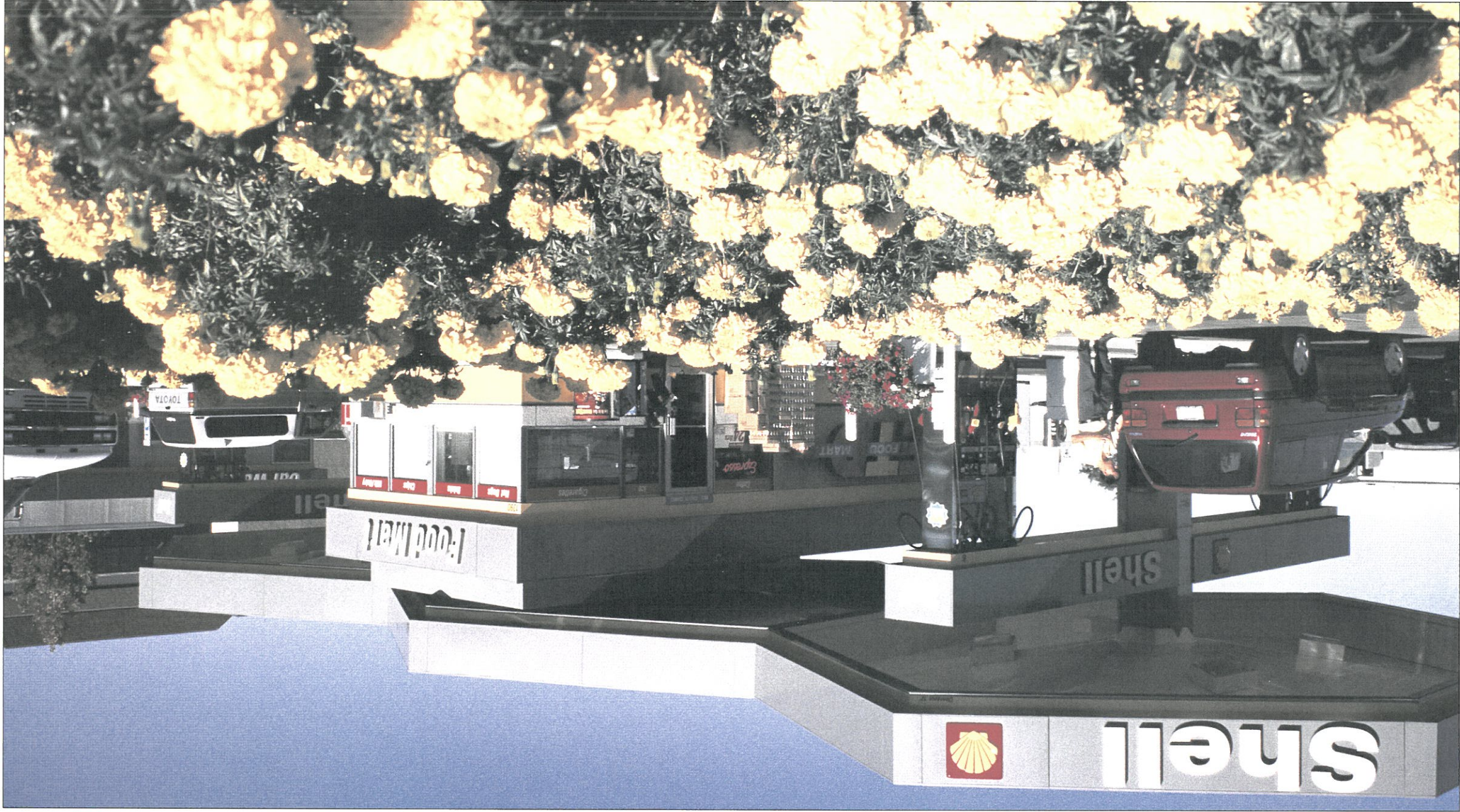
NEAR-MISS INCIDENT

While offloading product from a barge, a product hose was lifted about 25 feet above the barge deck using the barge's boom. Suddenly, the boom's steel cable, which was new, snapped and the hose fell to the deck. Luckily, no one was injured. Since the cable was new and properly rated for the application, the operators assumed the faulty cable was in good condition and did not perform a load test. Never assume ... always follow proper safety procedures.

Sunday	Monday	Tuesday	Wednesday	Thursday	Friday	Saturday
<div>September 1996</div> <div>S M T W T F S</div> <div>1 2 3 4 5 6 7</div> <div>8 9 10 11 12 13 14</div> <div>15 16 17 18 19 20 21</div> <div>22 23 24 25 26 27 28</div> <div>29 30</div>	<div>November 1996</div> <div>S M T W T F S</div> <div>1 2</div> <div>3 4 5 6 7 8 9</div> <div>10 11 12 13 14 15 16</div> <div>17 18 19 20 21 22 23</div> <div>24 25 26 27 28 29 30</div>	1	2	3	4	5
6	7	8	9	10	11	12
13	14	15	16	17	18	19
20	21	22	23	24	25	26
27	28	29	30	31		
Standard Time Returns				Halloween		



MARKETING *San Francisco Retail District*



1390 South Novato Blvd., Novato, California

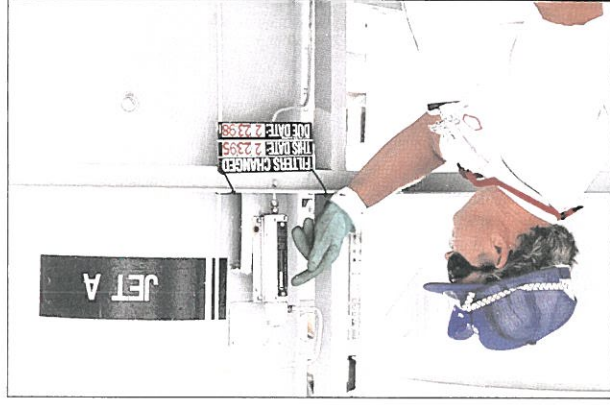


"Marketing employees operating company vehicles drive 12 million miles a year visiting retail stations and contractors. Many of our stations are located in major metropolitan areas known for high-volume traffic. Our defensive driver training programs help Shell employees maintain an enhanced awareness on the road, avoid accidents and return home safely each day."

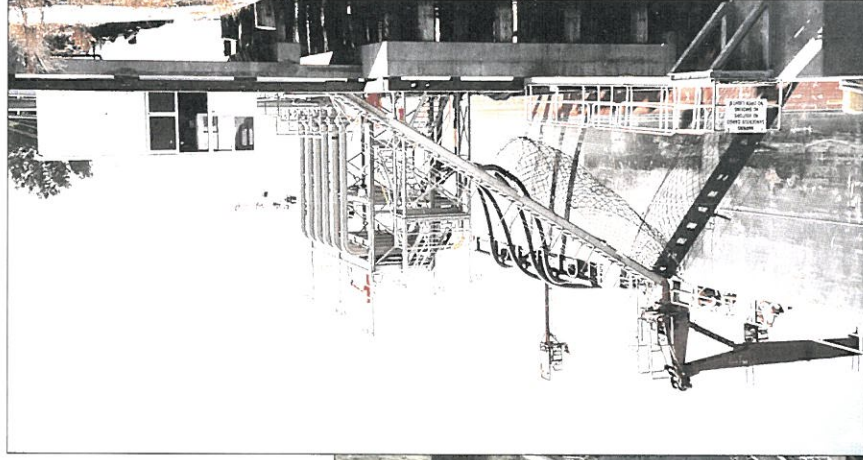
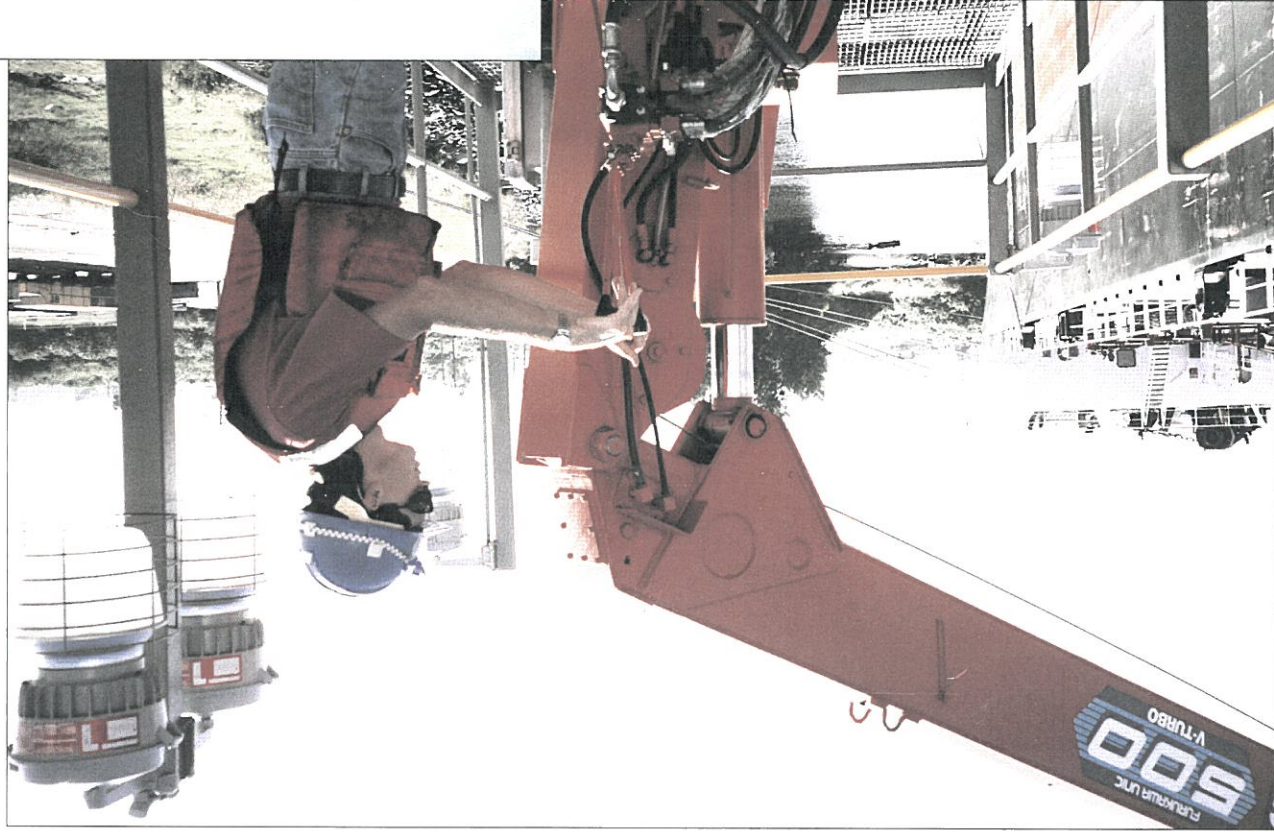
Sunday							Monday							Tuesday							Wednesday							Thursday							Friday							Saturday						
October 1995							December 1996																																									
S	M	T	W	T	F	S	S	M	T	W	T	F	S																																			
		1	2	3	4	5	1	2	3	4	5	6	7																																			
6	7	8	9	10	11	12	8	9	10	11	12	13	14																																			
13	14	15	16	17	18	19	15	16	17	18	19	20	21																																			
20	21	22	23	24	25	26	22	23	24	25	26	27	28																																			
27	28	29	30	31			29	30	31																																							
3							4							5							6							7							8							9						
														Election Day																					9/80 Schedule B													
10							11							12							13							14							15							16						
							Veteran's Day																												9/80 Schedule A													
17							18							19							20							21							22							23						
																																			9/80 Schedule B													
24							25							26							27							28							29							30						
																												Thanksgiving Day							9/80 Schedule A													



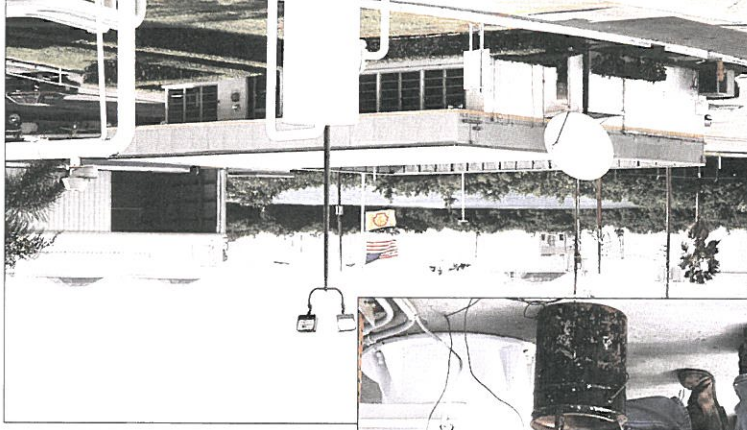
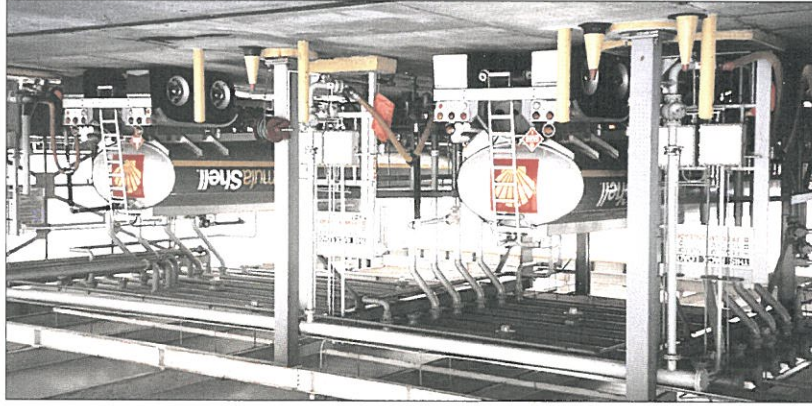
MARINE, PRODUCTS DISTRIBUTION Port Tampa, Florida



Kurt Petersen



Kurt Petersen



Marine employee:

"As I was using a hammer and chisel to remove a bearing race from a trailer hub, a metal chip from the chisel struck the lens of my safety glasses. The impact was hard enough that it left a permanent scratch on the lens. It's another example of why it pays to wear your safety equipment."

1	2	3	4	5	6 <i>First Day of Hanukkah</i> 9/80 Schedule B	7
8	9	10	11	12	13 9/80 Schedule A	14
15	16	17	18	19	20 9/80 Schedule B	21
22	23	24	25 <i>Christmas Day</i>	26	27 9/80 Schedule A	28
29	30	31			<div> November 1996 </div> <div> S M T W T F S 1 2 3 4 5 6 7 8 9 10 11 12 13 14 15 16 17 18 19 20 21 22 23 24 25 26 27 28 29 30 </div>	<div> January 1997 </div> <div> S M T W T F S 1 2 3 4 5 6 7 8 9 10 11 12 13 14 15 16 17 18 19 20 21 22 23 24 25 26 27 28 29 30 31 </div>

